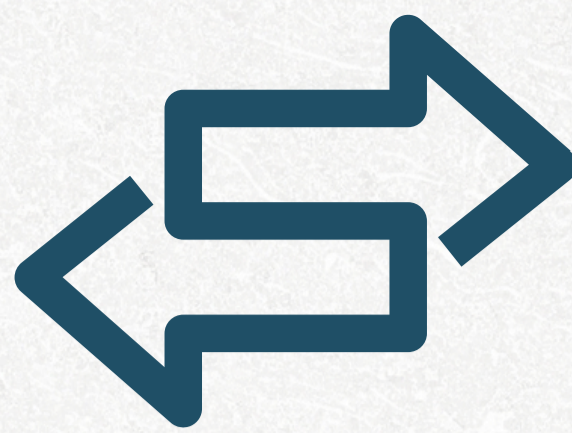
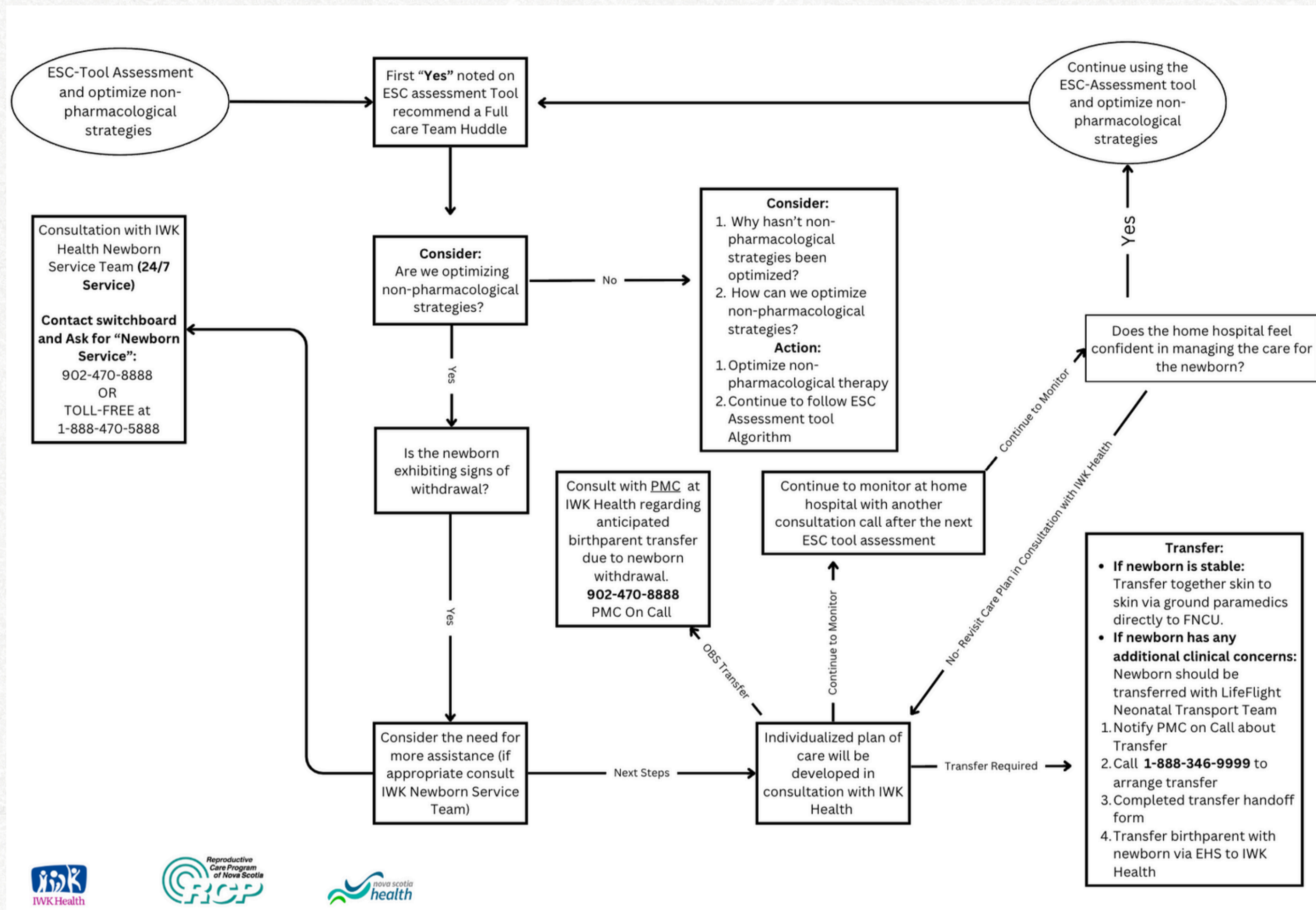


TRANSFER



A NEWBORN DIAGNOSED WITH NEONATAL OPIOID WITHDRAWAL SYNDROME



KEY CONSIDERATIONS



Begin and continue to **optimize all non-pharmacological** interventions.



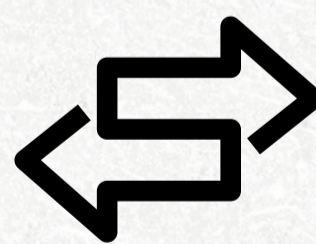
Full Care Team Huddle at the **FIRST** yes to support anticipatory planning for transfer (as needed).



If the newborn exhibits **significant withdrawal** impeding the ability to eat, sleep or be consoled, **consult IWK Health Newborn Service**.



Create an **individualized care plan** in consultation with IWK Health. Include anticipatory guidance for potential challenges.



Determine transfer need:

- 1) **NOWS diagnosis is the sole reason for transfer** (limited capacity) transfer via ground operations - **Direct Admit to FNCU, IWK**

- 2) **Additional clinical comorbidities requiring** NICU admission will be transferred via EHS LifeFlight **directly to NICU, IWK**.